



SCANDIC CPH STRANDPARK

General

- Free WiFi throughout the hotel
- Bar and restaurant
- Spa and pool
- Shop open 24 hours
- Modern fitness facilities
- Parking under the hotel (fees apply)
- Nordic Ecolabelled

Rooms

- 357 rooms
- 18 disability-friendly rooms
- Online checkout

Meeting, conference and banquet

- Ballroom
- 5 meeting rooms
- Modern AV equipment
- Break areas

Location

- 400 m to the metro
- 700 m to Copenhagen Airport
- 1 km to Amager Beach Park
- 8 km to Copenhagen City Hall Square

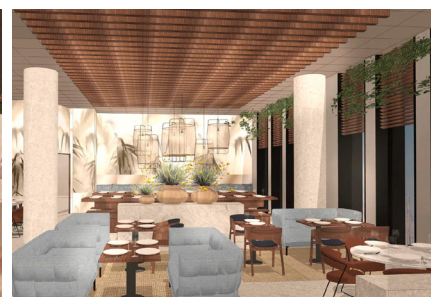
Scandic CPH Strandpark is located between the city and the beach with views of both Copenhagen, Øresund and the airport. The area offers a wide variety of outdoor recreational activities, and the city center can be reached by metro in only 12 minutes. Copenhagen Airport is only one metro stop away.

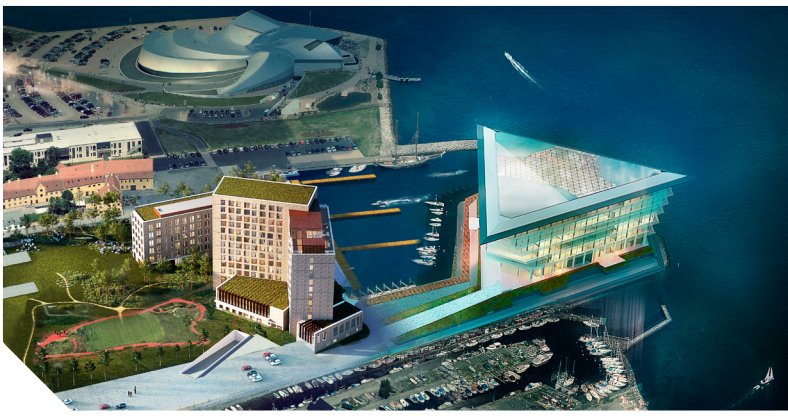
Whether you are a business traveler participating in a meeting or enjoying a few vacation days away from home, you will feel comfortable at Scandic CPH Strandpark. Inside the hotel is a warm and cozy atmosphere with interiors and materials that have been inspired by the beach and the sea. The hotel offers many small areas where you can work or hold an informal meeting. In the spa, you can swim in the pool or book a treatment with one of our spa therapists.

Our restaurant offers a nice dinner for both small and large parties, and in the hotel's rooftop bar, you can enjoy a drink accompanied by fantastic views of Øresund.

Naturally, we also have Scandic's large breakfast buffet ready for you after a good night's sleep.

Parking is available under the hotel for a fee.





Scandic CPH Strandpark can accommodate meetings and conferences of up to 350 people and banquets up to 240 people. Our Ballroom can be divided into 3, and in addition, we offer 5 meeting rooms of different sizes. The rooms are flexible and can, for example, be decorated with small lounge areas. We offer modern A/V equipment, free WiFi and natural daylight in all the rooms. Outside the rooms, we offer bright and creative break areas with cozy seating arrangements that invite for small meetings or group work.

No/name	m ²	Theatre	Classroom	Cabaret	U-shape	Boardroom	Lounge	Banquet
Ground floor								
Meeting room 5 with lounge	60	–	–	–	–	14	12	–
1st floor								
Meeting room 1	35	–	–	–	–	–	14	–
Meeting room 2	29	–	–	–	–	16	–	–
Meeting room 2 with lounge	64	–	–	–	–	16	14	–
Meeting room 3 with lounge	60	–	–	–	–	16	14	–
Meeting room 4	44	–	–	–	–	16	–	–
Ballroom 1	120	120	48	64	34	30	–	80
Ballroom 2	109	110	36	64	34	30	–	80
Ballroom 3	120	120	48	64	34	30	–	80
Ballroom 1+2	229	230	96	128	50	–	–	160
Ballroom 2+3	229	230	96	128	50	–	–	160
Ballroom 1+2+3	349	350	288	192	60	–	–	240

